

Manufacturer: **LMG spółka z ograniczoną odpowiedzialnością spółka komandytowa**  
**ul. Waryńskiego 32-36**  
**86-300 Grudziądz**

Products: **Occupational footwear**  
**OLGA model 738**  
**OLGA model 740**

The product satisfies the applicable essential health and safety requirements in accordance with Annex II Regulation (EU) 2016/425 of the European Parliament and of the Council of 9 March 2016 on personal protective equipment and repealing Council Directive 89/686/EEC, as well as the requirements of standards harmonized and technical specifications: **EN ISO 20347:2022** "Personal protective equipment - Occupational Footwear."

#### Category of footwear: **OB SR E CI**

**OB** - basic requirements including slip resistance on ceramic tile floor with NaLS and to the appropriate additional requirements;

**E** - energy absorption of seat region;

**CI** - cold insulation of outsole complex;

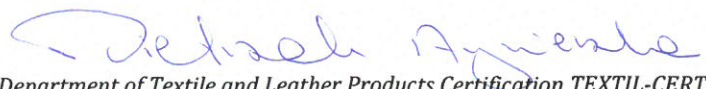
**SR** - slip resistance on ceramic tile floor with glycerine.

The attachment No. Z1/066/2024/PPE/1439/B is an integral part of EU type-examination certificate. The information laid down in the attachment are the basis for the issuance of the present certificate.

Date of first issue: 20.03.2024

Date of issue: 20.03.2024

Date of expiry: 19.03.2029



Department of Textile and Leather Products Certification TEXTIL-CERT

Deputy Head

Agnieszka Pietrzak, MSc. Eng.



Lukasiewicz Research Network – Lodz Institute of Technology

Director

Radosław Dziuba, PhD



### 1. Description of the personal protective equipment

PPE	<b>Occupational footwear</b>	
Identification type	<b>OLGA model 738</b>	<b>OLGA model 740</b>
Size	<b>36 ÷ 41 (French size)</b>	
Colour	- upper, warmer	<b>white</b>
	- outsole	<b>grey</b>
Mounting system	<b>direct injection</b>	
Design	<b>C, half knee boot - according to EN ISO 20347:2022, tab.1</b>	
Classification	<b>II – all-polymeric footwear; according to EN ISO 20347:2022, tab.1</b>	
Risk category	<b>II – according to Regulation (EU) 2016/425 of the European Parliament and of the Council of 9 March 2016 on personal protective equipment and repealing Council Directive 89/686/EEC – Annex I</b>	

### 2. Photo of the personal protective equipment

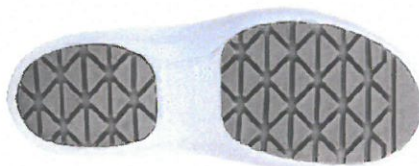
**OLGA model 738**



**OLGA model 740**



**Podeszwa**



### 3. Characteristic of the personal protective equipment

<b>USED MATERIALS</b>	
Upper, outsole	copolymer EVA
Tread	rubber
Upper of warmer	triple-layered material
Warmer's insock	nonwoven
Warmer's collar	corduroy + PU
Information on the used materials is included in the manufacturer's technical documentation	

**PROTECTIVE PROPERTIES**

**Occupational footwear** meets to the requirements of the EN ISO 20347:2022 standard:

**OB** - basic requirements including slip resistance on ceramic tile floor with NaLS and to the appropriate additional requirements;

**E** - energy absorption of seat region;

**CI** - cold insulation of outsole complex;

**SR** - slip resistance on ceramic tile floor with glycerine

**4. Basic of the conformity assessment**

**REGULATION**

Regulation (EU) 2016/425 of the European Parliament and of the Council of 9 March 2016 on personal protective equipment and repealing Council Directive 89/686/EEC

**STANDARDS**

EN ISO 20347:2022 *Personal protective equipment. Occupational footwear*

EN ISO 20344:2021 *Personal protective equipment. Test methods for footwear*

**TESTS AND CERTIFICATES**

Document No.	Date	Identification of the institution issuing the document
40-LBŚ/385/G/17_683	12.09.2017	Products, Processes and Environment Laboratory, Institute of Leather Industry, Lodz, Poland
13/2024/BL-BO	07.02.2024	Footwear Research Laboratory, Sieć Badawcza Łukasiewicz – Łódzki Instytut Technologiczny, Łódź, Poland

**TECHNICAL DOCUMENTATION ATTACHED TO THE APPLICATION FOR THE EU TYPE-EXAMINATION**

**OTHER INFORMATIONS**

The EU-type examination certificate applies only to the product model submitted for assessment.

The manufacturer or the authorised representative shall inform Notified Body (NB 1439) of all modifications to the approved type and all modifications of the technical documentation that may affect the conformity of the PPE with the applicable health and safety requirements or the conditions of validity of the certificate.

Without the written consent of Notified Body (NB 1439), the certificate with attachments may not be reproduced other than in its entirety.



Department of Textile and Leather Product Certification TEXTIL-CERT  
 Deputy Head

Agnieszka Pietrzak, MSc. Eng.

Łódź, 20 March, 2024